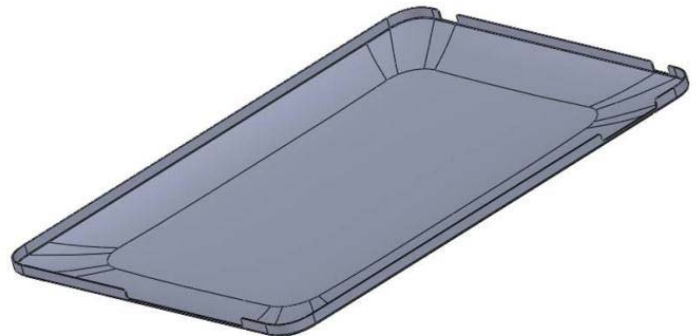
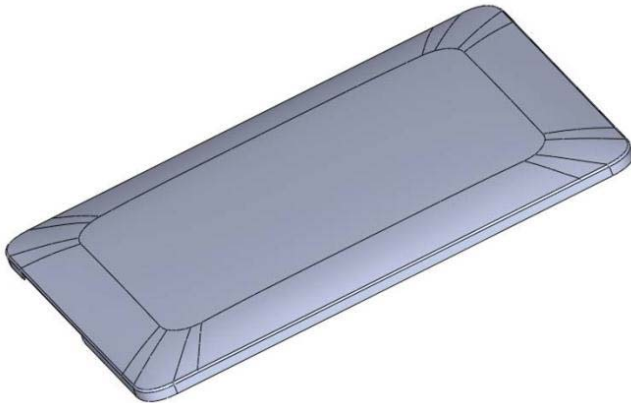




Number 1	Name Shasta
Technology	3iTech® - NISSEI 200T IMM
Heating	1 face
Location - Machine	RocTool Japan 日本デモセンタ (長野)
Induction Generator	100 KW
Mould size	520 x 670 x 570 mm
Mould weight	1000 kg
Cavities	1
Injection gate	Banana shape gate / pin point
Runner / Sprue	Hot runner
Sliders / Lifters	yes
Maxi surface temperature	200 °C
Part size	190 x 125 mm
Part weight	15 grs
Grained area	Yes (2 types)
Gloss area	no
Nominal thickness	0.9 mm
Minimum thickness	0.5 mm
Known materials	ABS/PC; PC
Maximum rate fiber	30% (extra cost for higher rate)
Average cycle time	40 sec
Technical interest	Weld lines with thin wall sequential hot runner system Grained & Glossy area



Bridging Science and Art to Produce a Higher Standard

Number 3 - Name	I-pad 1
Technology	3iTech®
Heating	1 side
Location - Machine	長野デモセンター Nagano Center
Induction Generator	50KW
Mould size	500 x 400 x 305 mm
Mould weight	220 kg
Cavities	1
Sliders / Lifters	no
Maxi surface temperature	300°C
Part size	244 x 191 mm
Part weight	59 g
Grained area	No
Gloss area	Yes
Nominal thickness	0.6 mm
Known materials (resins)	PA / PP / PLA / PMMA / PET / PC
Maximum rate fiber	50 to 60%
Example cycle time	50 up to 160°C → 1,5 min
Technical interest	Good deformation
	Glossy surface
	Steep angle
	Addition of cosmetic layers/fabrics
	Wide and flat surface